

INTRODUCING  
**RevealPRO™**

FEATURING OUR  
**320 X 240**  
THERMAL SENSOR

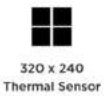


## Affordable, High-Performance Handheld Thermal Imaging.

### Find Hot or overloaded switches & circuits!

RevealPRO is our most advanced handheld thermal imaging camera. Highly durable and easy to use, **RevealPRO** combines a high-performance 320 x 240 thermal sensor with intuitive software to help you work smarter. And, when you need it, a powerful 300-lumen LED light is available at the touch of a button.

RevealPRO breaks new barriers by offering high-resolution thermal imaging at an affordable price.



320 x 240  
Thermal Sensor



32°  
Field of View



-40 to 626°F (-40 to 330°C)  
Detection Range



1800 ft (550m)  
Distance



Works Day  
& Night



300 Lumen  
LED Flashlight

**seek**  
thermal

**76,800 THERMAL PIXELS**  
POWERED WITH **FASTFRAME**



#### Key Features

**Find Hot or overloaded switches** - Scan equipment for hot spots signalling loose connections and overloaded circuits to keep homes, businesses, and manufacturing safely up and running.

**Dozens of uses** - For the tradesman; From Electrical, Insulation, plumbing to finding damp areas or leaks. Outdoors; Hunting, Farming, Security and Search & Rescue.

**Thermal Level and Span** – Easily set and lock a temperature range to display the maximum thermal information of any object with a set point and range.

**Emissivity Control** – Calibrate through easy, pre-defined settings. Compensate for various surface materials, ensuring accurate readings and reporting.

**Nine Standard and High Contrast Colour Palettes** – From standard grayscale to spectra high contrast helps users easily examine and understand thermal imagery during inspection.

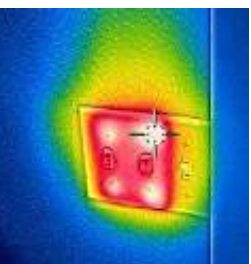
**Full-Frame Mapping of Temperature Distribution** – Displays all temperature data for maximum clarity and resolution.

**Multiple User Modes** – Normal, Spot temperature and Level & Span included.

**Ruggedized Display** – 2.4" colour display featuring Corning® Gorilla® Glass protection.

**4x Digital Zoom** - Wide, 32° field of view with 4x digital zoom capability easily scan a large area and identify potential hazards in seconds.

VAUGHAN SPORTS Ph: 0800-300776 E: [jvco@vaughan.co.nz](mailto:jvco@vaughan.co.nz) W: [www.vaughan.co.nz](http://www.vaughan.co.nz)



# RevealXR

## BUILT FOR PUBLIC SAFETY

Long-Range Thermal Camera and 300 Lumen LED Light. All-In-One Device.



206 x 156  
Thermal  
Sensor



20°  
Field of  
View



-40°F to 626°F  
Detection  
Range



900 ft  
Distance



Works Day  
& Night

Available in Pure Black



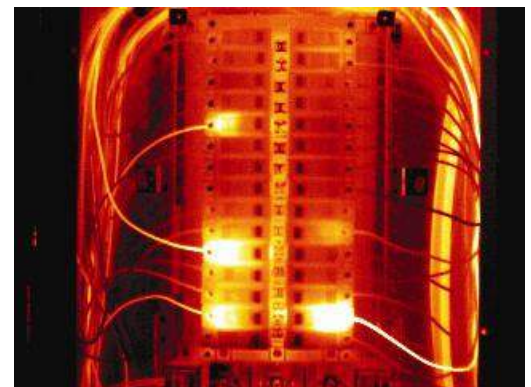
# RevealXR

## Long Range Thermal Imaging

The **RevealXR** boasts an accurate thermal sensor at 206x156 with a 20-degree Narrow Field of View for infrared detection and powerful 300-Lumen LED flashlight to gain visible light at a moments notice.

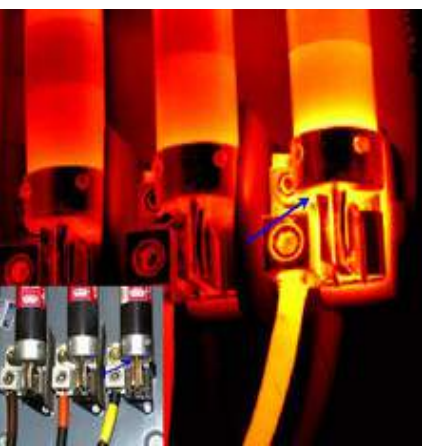
Its intuitive, single-handed interface and button control makes it ideal for security, safety and hunting in dark conditions. Its fixed focus narrows in at distances of 900 feet where the eye can't see in dark conditions - and has a dedicated flashlight control for quick detection as needed.

The standalone Seek **RevealXR** handheld imager combines powerful thermal insight with a rechargeable battery lasting more than 10 hours, and a large colour display in one durable device.



## Find blown fuses, bad or overloaded connections

A Seek thermal camera lets you see circuits that have blown fuses or bad connections. If left unchecked, electrical problems can potentially cause high temperatures. Start by checking for loose or corroded connections or overheated components. The naked eye often misses what a thermal imager can see and verify.



Seek  
thermal

VAUGHAN SPORTS Ph: 0800-300776 E: [jvco@vaughan.co.nz](mailto:jvco@vaughan.co.nz) W: [www.vaughan.co.nz](http://www.vaughan.co.nz)